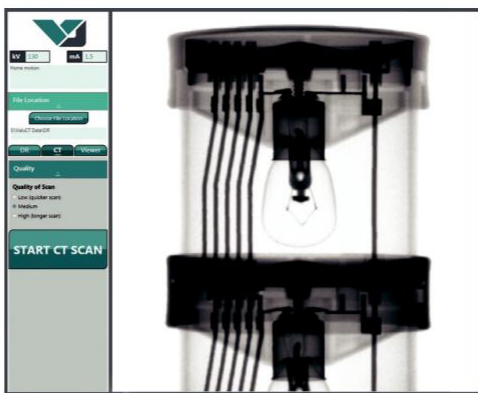
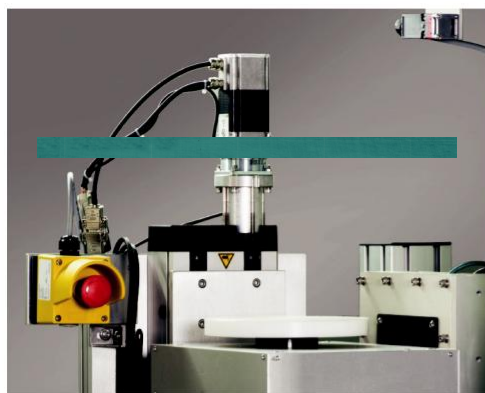


Key Features

- Best-in-class DR/CT imaging value, in terms of price vs. imaging performance
- Supports seamless transition of systems and techniques for DR and CT
- Easy to operate... no prior CT experience necessary
- An array of imaging/software options available to fit a wide range of imaging applications
- All running on VJT's Vi3 Software architecture, for system control and image acquisition, reconstruction and evaluation
- User friendly operation via "Touch Display Interface"
- Joystick controls provided for optimal real-time imaging operation
- Supports a wide range of applications, including Automotive, Aerospace, Electronics, Additive Manufacturing, Academia/R&D





Product Specifications

X-Ray Source

Type	Standard Focus	Microfocus
Voltage	Max. 160kV	Max. 150kV
Power	Max. 500W	Max. 75W
Focal Spot Size	0.8mm (IEC60336)	7 - 50µm

Detector

Type	VJ 1313 DX	VJ 2020 DXV
Active Area	130 x 130mm	200 x 200mm
Pixel Pitch	127µm	194µm
Pixel Count	1024 x 1024	1024 x 1024
Contrast Range	16 bit	16 bit

Part Information

Max. Part Dims - CT	110 x 110mm	170 x 170mm
DR	110 x 470mm	170 x 480mm
Weight	up to 10kg	up to 10kg

Cabinet

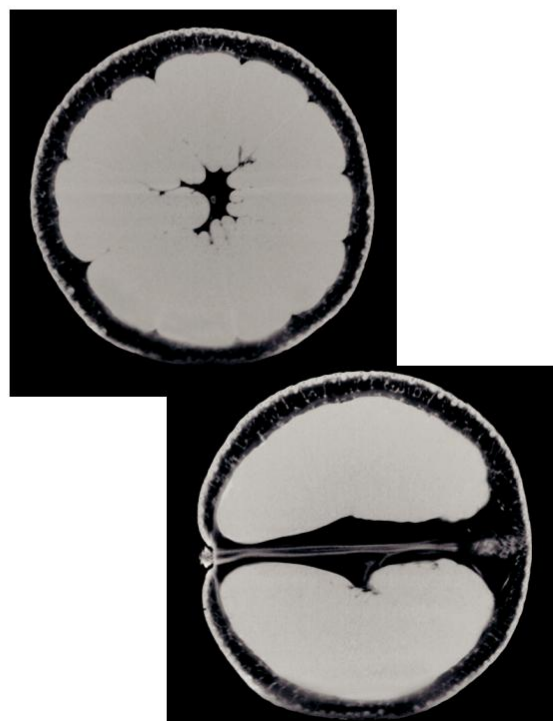
Length	63.5" / 1,613mm
Width	31.5" / 800mm
Height	72" / 1,829mm
Weight	3400 lbs / 1,542kg

Software

Image Acquisition:	Vi3 Image Acquisition Software
DR Image Analysis:	Vi3 Image Analysis Software, ADE™
CT Reconstruction/Analysis:	Fraunhofer VOLEX
Additional CT Options:	Full Range of Volume Graphics Studio Max Software and Option Packages



CT scans for dental application



CT scans of an orange

