

Therm-App® TH
more to see.

ANDROID THERMOGRAPHIC IMAGING DEVICE

Turning Android Smartphones Into Professional
Thermography Cameras



What is Therm-App?

Therm-App is an innovative and tool that transforms an Android smartphone into a professional Thermography (and night vision) camera. It provides high quality resolution of 384x288 pixels, takes advantage of convenient smartphone features, and is sold at an affordable price.

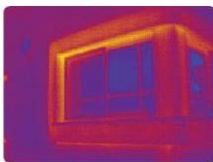
Benefits for Thermographers:

1. Superb image quality – high resolution of 384x288 provides excellent performance
2. Compact and lightweight – easy to carry around
3. Cost effective Solution – Compared to Integrated, similar resolution Cameras
4. Touch screen advantages – user friendly interface, fast analysis
5. Saves time – allows on-the-spot instant upload to Dropbox, email and IM
6. Rich and evolving features – constant updates available from Google Play

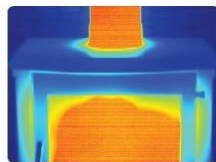
Features

1. Accurate temperature measurements
2. Digital zoom
3. Full thermographic data export
4. Customized text and video annotations
5. Manual and auto temperature scales
6. Multiple color palettes
7. Professional PC analysis and reporting software

Applications



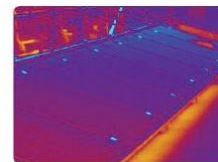
Building Inspection



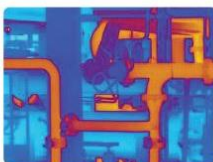
Heating, Ventilating,
& Air Conditioning
(HVAC)



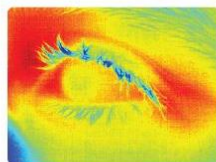
Electrical Inspection



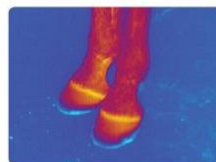
Green Energy Facility
Inspection



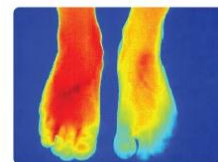
Industrial &
Mechanical
Inspection



Research and
Education



Veterinary & Farming
& Pet Control



Healthcare and Medical

Technical Specifications:

Measurement	
Resolution	384 x 288 pixels (>110,000 pixels)
Accuracy	+/- 2°C or 2% (@25°C)
Sensitivity	NETD <0.07°C
Temperature Range	0 – 200 °C
NUC Calibration	Shutterless
Hardware	
Imager	384 x 288 microbolometer LWIR 7.5 -14um
Optics	6.8mm lens (55° x 41°). Optional lenses available.
Focus	Manual, 0.2m to infinity
Frame Rate	8.7Hz
Weight	123 grams / 4.33 ounces
Size	55 x 65 x 40mm (2.16 x 2.55 x 1.57in)
Operating Temperature	-10°C to +50°C (14°F to +122°F)
Storage Temperature	-20°C to +60°C (-4°F to +140°F)
Power Supply	No battery, 5V over USB OTG cable, power consumption < 0.5W
Certifications	CE, FCC, RoHS
Encapsulation	IP54
Visible Camera	Typically 8 megapixels*
Mount/Handle	Ergonomic handle, using 1/4"-20 standard tripod mount
Device Attachment	Clip-on for smartphone (5 -10cm span)

* Smartphone dependent

Smartphone	
Minimal Requirements	Android 4.1 and above, supporting USB OTG
High Resolution Touchscreen	Yes *
Software	
Measurement Tools	<ul style="list-style-type: none"> Center Spot Hot/cold threshold based pallets Manual and auto scale
Measurement Settings	Emissivity, Reflected Temperature
Annotations	Text & Video Annotations
Output	Video & Audio (H.264), Snapshot (IR, VIS, Metadata)
Instant Share	Dropbox, Email , SMS
Android Share	Via media gallery
Color Palettes	Rainbow, Iron, Vivid, Grey, Red Hot, Blue Cold
Temperature Scale Range	Auto, Manual
Zoom	Continuous digital zoom using touchscreen
Feature updates	Yes (via Google Play)
Maintenance	Bad pixel repair utility
Quick access menu	One touch
Analysis and reporting software	<ul style="list-style-type: none"> Professional PC software Files and folders Management Multiple image analysis tools Fast report generation MS Word templates

The Therm-App TH Kit includes:

- Therm-App TH Thermal Camera
- 6.8mm Lens
- Protective Carrying Case
- Ergonomic Handle & Phone Grip
- 3 X Micro USB Cables (connection from phone to camera)
- User Manual
- Analysis and reporting software (upon request)
- Free software updates (via google play)
- One year Warranty

Optional Accessories:

Therm-App has the ability to change its lenses. Currently there are 4 types of lenses, each with a different focal length. Typically, shorter focal length provides a wider field of view. Below are some examples for the image received with each lens.

Lens Type	FOV (field of view)	Detection (human size target)
6.8mm	55°(H) x 41°(V)	~100m
13mm	28.8° (H) x 21.7° (V)	~200m
19mm	19°(H) x 14°(V)	~350m
35mm	10.5° (H) x 7.9° (V)	~600m



IT'S EASY TO

- Operate**
Touchscreen controls, Smartphone clip on
- Connect**
WiFi, 3G / 4G, Bluetooth, USB
- Share**
Email, Dropbox, Social Networks, Messaging Apps
- Upgrade**
Software updates via Google Play, Developers SDK