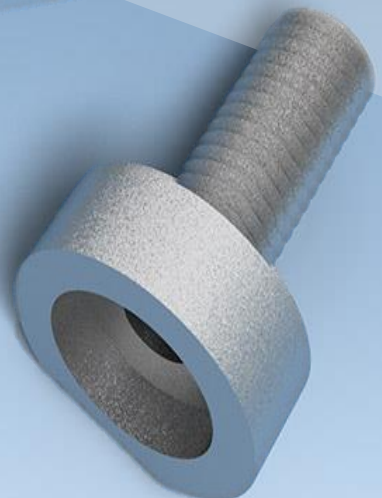




Focal Spot Pinhole

The Focal Spot Pinhole from RTUTec enables a repeatable, reliable and exact measurement of the size of the focal spot of different X-ray tubes, in accordance with the IEC 60336:2005 and IEC 61223-3-1, 2, 4 standards.

Focal Spot Pinhole is CE certified and the kit contains a 90:10 gold-platinum alloy diaphragm with four different pinhole diameters, thus enabling the measurement of focal spot sizes that vary from 0.1 mm to above 2.5 mm.



Diaphragm \varnothing 5mm x 1.5 mm

Dimensions:

Plate Material: PMMA (Lucite)

Testing Elements Included

diaphragm made from a 90:10 gold-platinum alloy
four different pinhole diameters:

- 0.010 mm for focal spot sizes from 0.5 to 0.10 mm
- 0.030 mm for focal spot sizes below 1.0 mm
- 0.075 mm for focal spots from 1.0 to 2.5 mm
- 0.100 mm for focal spot sizes above 2.5 mm

optional mounting screw

optional mounting frame for Pro-Stand

- The user manual provides guidelines for carrying out each test, results assessment and registration.
- Complies with:
IEC 60336:2005
IEC 61223-3-1, 2, 4
- CE certified.

